

## APPENDICES

---

114: Basic Planning Map

115: Relief Map

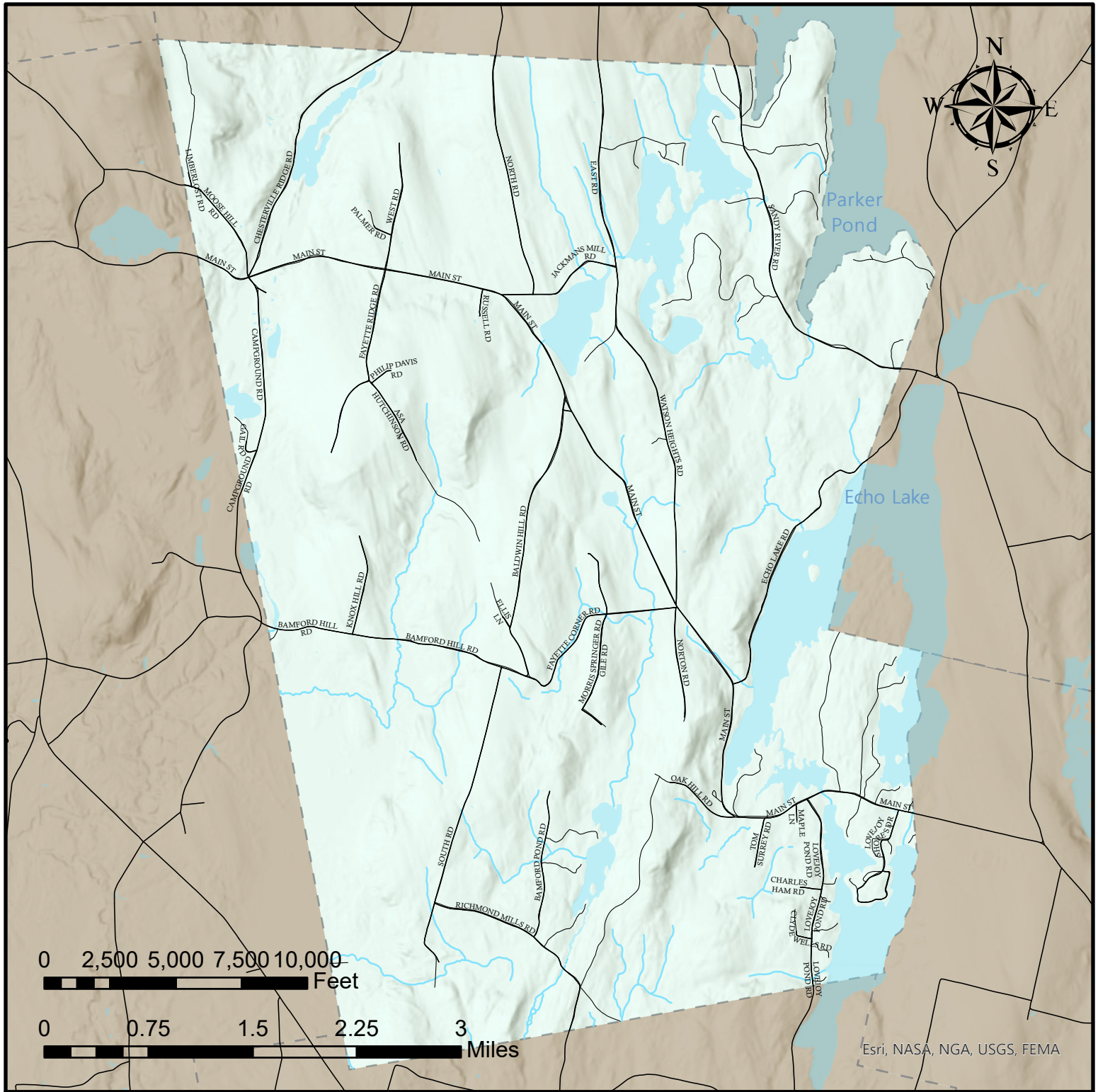
116: Soils Map

117: Critical Natural Resources Map

118: Water Resources Map

119: Land Coverage Map

120: Future Land Use Map



# Town of Fayette

Kennebec County, Maine  
Basic Planning Map  
2020 Comprehensive Plan

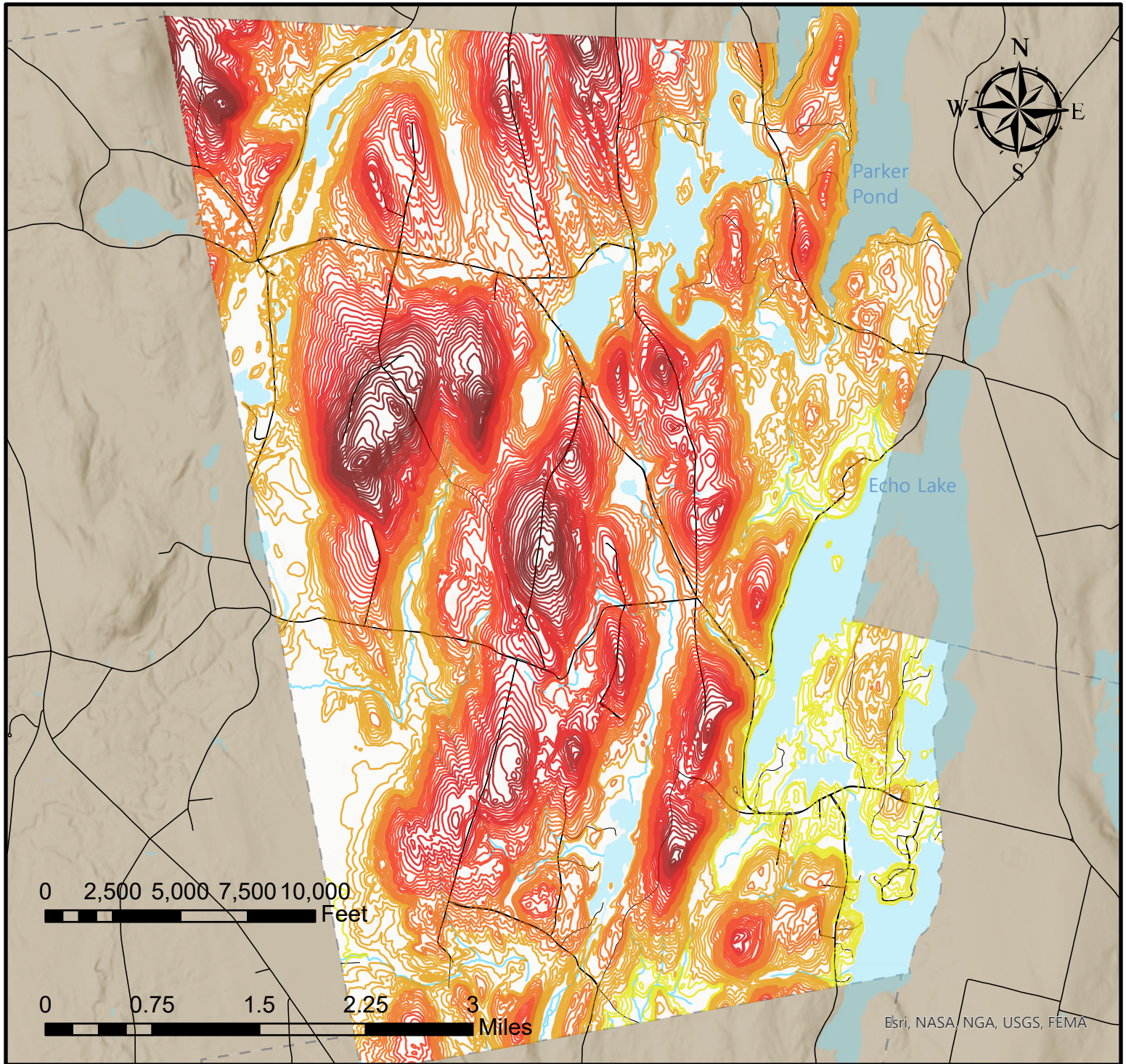


## Map Legend

- State Highway
- State Aid
- Lakes, Ponds, & Rivers
- Streams

Neither KVCOG nor the Town of Fayette assume any liability for the data delineated herein. All information depicted on this map is for planning purposes only and non-regulatory. Boundary data is based on digital sources and may differ from ground-based observations.  
Data Sources: Maine Office of GIS, Maine DOT Created 01-2021 CT





**Town of Fayette**  
**Kennebec County, Maine**  
**Relief Map**  
**2020 Comprehensive Plan**

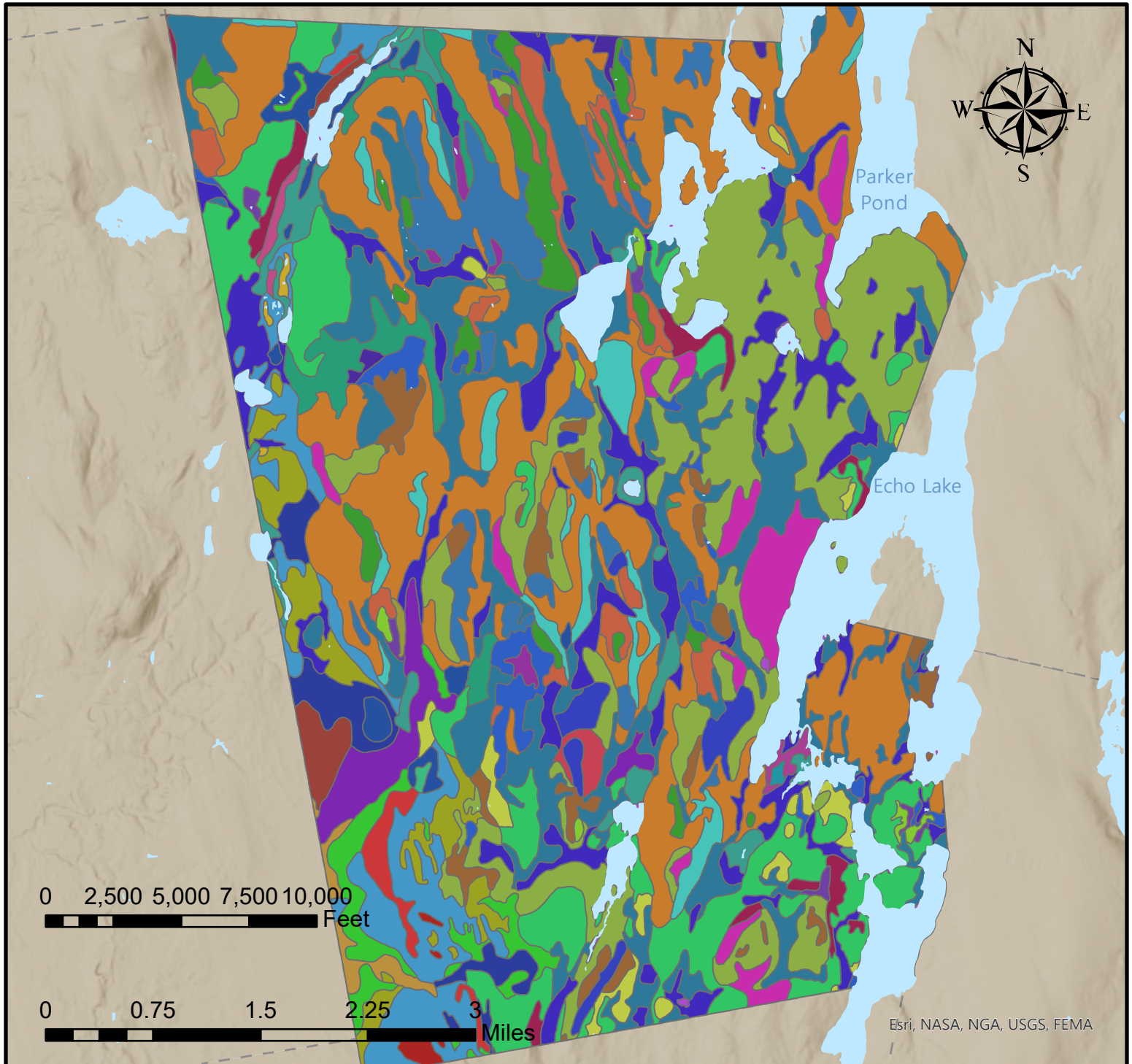


**Map Legend**

State Highway	0ft - 350ft	561ft - 630ft
State Aid	351ft - 420ft	631ft - 700ft
Lakes, Ponds, & Rivers	421ft - 490ft	701ft+
Streams	491ft - 560ft	
State Highway		

Neither KVCOG nor the Town of Fayette assume any liability for the data delineated herein. All information depicted on this map is for planning purposes only and non-regulatory. Boundary data is based on digital sources and may differ from ground-based observations.  
 Data Sources: Maine Office of GIS, Maine DOT Created 01-2021 CT

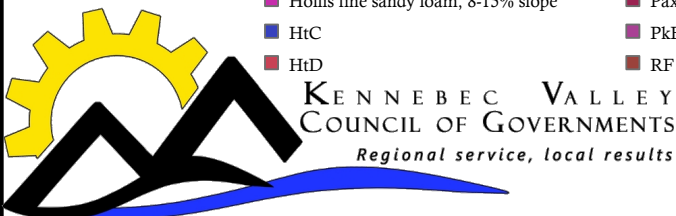




**Town of Fayette  
Kennebec  
County, Maine  
Soils Map  
2020  
Comprehensive  
Plan**

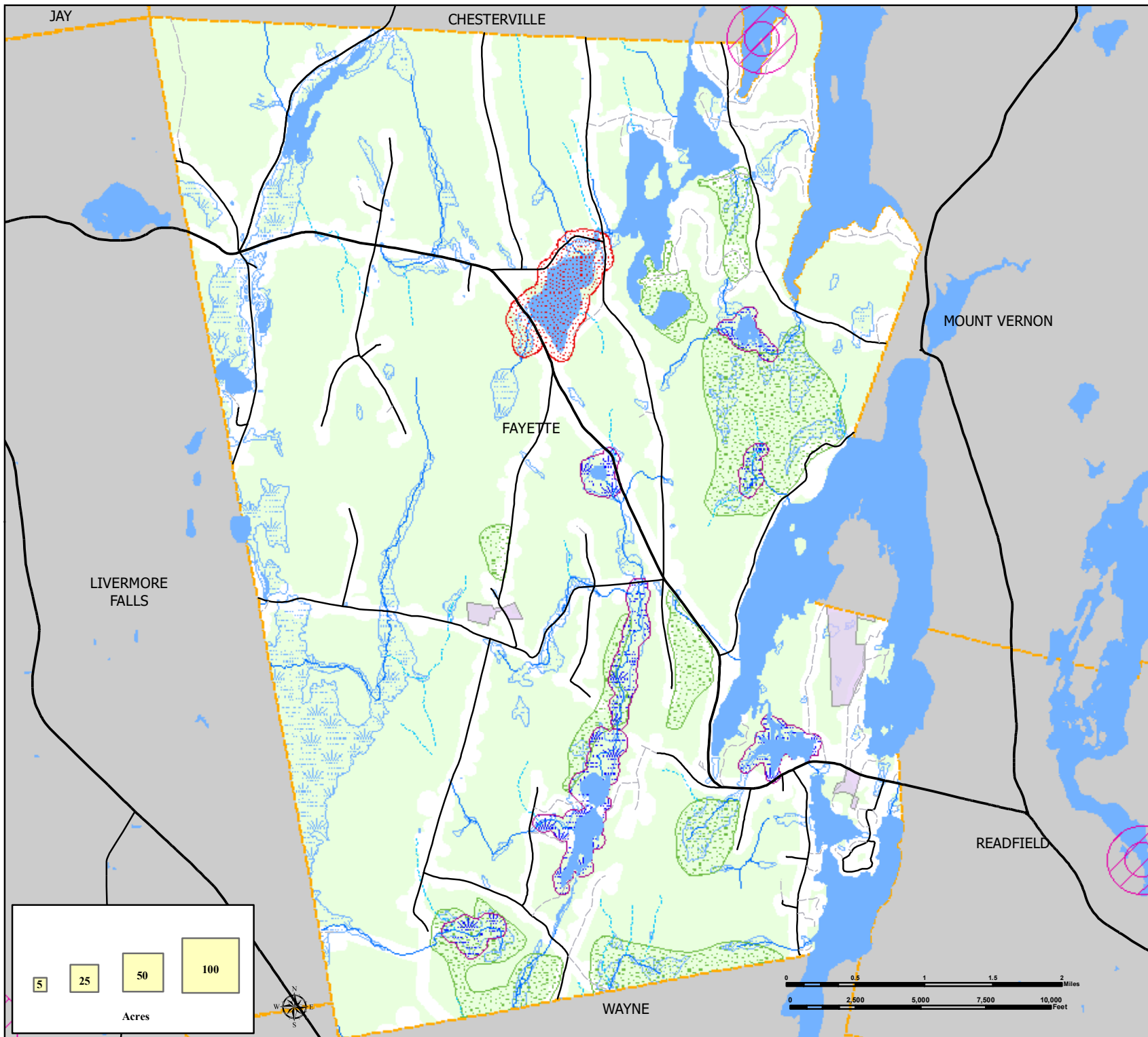
**Map Legend**

- |  |  |  |
|--|--|--|
| Berkshire fine sandy loam, 3-8% slope    | Paxton-Charlton fine sandy loam, 3-8% slope              | RcA  |
| Biddeford mucky peat                     | Paxton fine sandy loam, 8-15% slope                      | Ridgebury very stone fine sandy loam               |
| DL                                       | PcB  | Scantic silt loam                                  |
| Deerfield loamy fine sand, 0-8% slope    | Paxton very stony fine sandy loam, 8-15% slope           | Scarboro mucky peat                                |
| GP                                       | PcD  | Togus fibrous peat                                 |
| Hinkley gravelly sandy loam, 3-8% slope  | Paxton-Charlton fine sandy loam, 3-8% slope              | W  |
| Hinkley gravelly sandy loam, 8-15% slope | Paxton-Charlton fine sandy loam, 8-15% slope, eroded     | Windsor loamy sand, 3-8% slope                     |
| HkD                                      | PdD2   | Windsor loamy sand, 8-15% slope                    |
| Hollis fine sandy loam, 3-8% slope       | Paxton-Charlton very stony fine sandy loam, 3-8% slope   | WmD  |
| Hollis fine sandy loam, 8-15%            | Paxton-Charlton very stony fine sandy loam, 8-15% slope  | Woodbridge fine sandy loam, 3-8% slope             |
| Hollis fine sandy loam, 8-15% slope      | Paxton-Charlton very stony fine sandy loam, 15-30% slope | Wrc  |
| HtC                                      | PkB  | Woodbridge very stony fine sandy loam, 3-8% slope  |
| HtD                                      | RF   | Woodbridge very stone fine sandy loam, 8-15% slope |



Neither KVCOG nor the Town of Fayette assume any liability for the data delineated herein. All information depicted on this map is for planning purposes only and non-regulatory. Boundary data is based on digital sources and may differ from ground-based observations.  
Data Sources: Maine Office of GIS, Maine DOT Created 01-2021 CT





### Town of Fayette Kennebec County, Maine

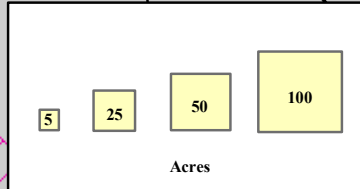
**Critical Natural Resources Map  
2021 Comprehensive Plan**

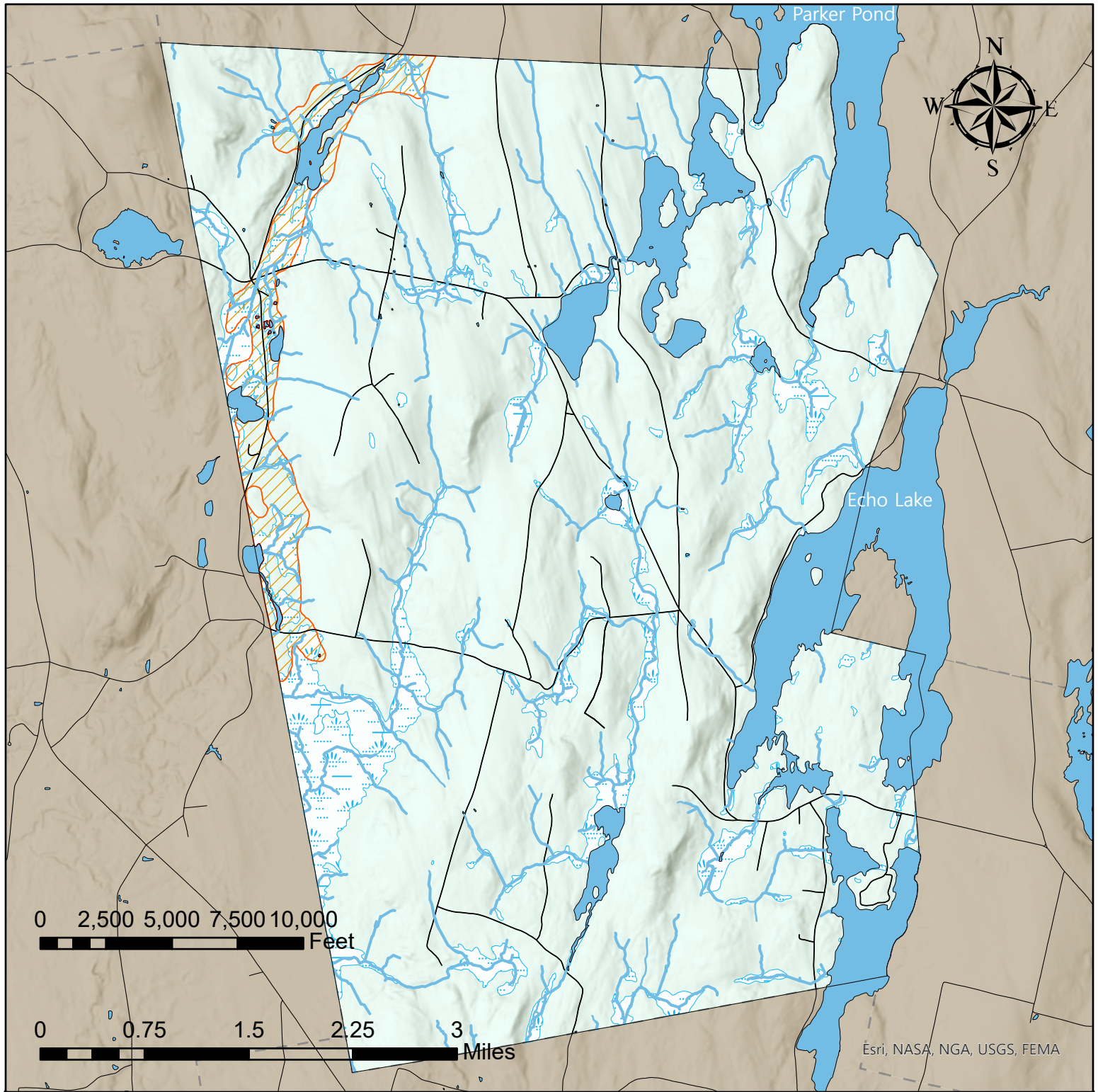
#### Map Legend

- Lakes, Ponds & Rivers
- Streams**
  - Perennial
  - Intermittent
- Roads**
  - State Highway
  - State aid
  - Local
  - Private
- Bald Eagle
- Scarlet Bluet
- IWWH
- Deer Wintering Areas
- Wetlands
- Conserved Lands

Neither KVCOG nor the Town of Fayette assume any liability for the data delineated herein. All information depicted on this map is for planning purposes only and non-regulatory. Boundary data is based on digital sources and may differ from ground-based observations.  
Data Sources: Maine Office of GIS, Maine DOT Created 12-2021 by JG

KENNEBEC VALLEY  
COUNCIL OF GOVERNMENTS  
*regional service, local results*





# Town of Fayette

Kennebec County, Maine  
Water Resources Map  
2020 Comprehensive Plan



## Map Legend

- Lakes, Ponds, & Rivers
- Class B Stream
- Roads
- Wetlands
- 10-50 GPM
- Non-plotting water
- FayetteTown
- FayetteStreamStats

Neither KVCOG nor the Town of Fayette assume any liability for the data delineated herein. All information depicted on this map is for planning purposes only and non-regulatory. Boundary data is based on digital sources and may differ from ground-based observations.  
Data Sources: Maine Office of GIS, Maine DOT Created 01-2021 CT





# **Town of Fayette** **Kennebec County, Maine** **Land Coverage Map** **2020 Comprehensive Plan**

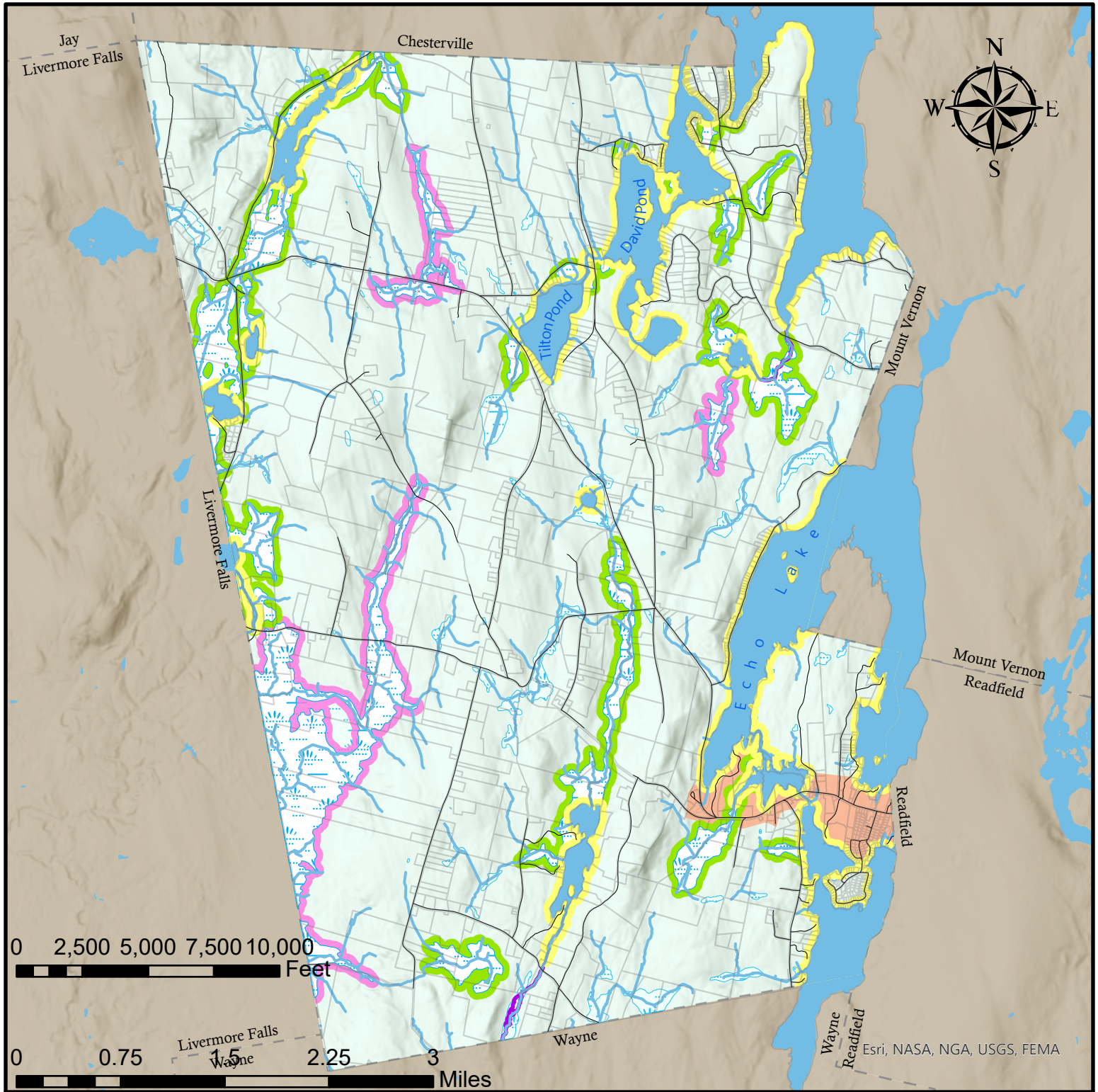


## **Map Legend**

Open Water	Mixed Forest
Developed, Open Space	Shrub/Scrub
Developed, Low Intensity	Herbaceous
Developed, Medium Intensity	Hay/Pasture
Barren Land	Cultivated Crops
Deciduous Forest	Woody Wetlands
Evergreen Forest	Emergent Herbaceous Wetlands

Neither KVCOG nor the Town of Fayette assume any liability for the data delineated herein. All information depicted on this map is for planning purposes only and non-regulatory. Boundary data is based on digital sources and may differ from ground-based observations.

Data Sources: Maine Office of GIS, Maine DOT Created 01-2021 CT



# **Town of Fayette** **Kennebec County, Maine** **Future Land Use Map** **2020 Comprehensive Plan**



**KENNEBEC VALLEY**  
**COUNCIL OF GOVERNMENTS**  
*Regional service, local results*

## **Map Legend**

- Roads
- Lakes, Ponds, and Streams
- Shoreland District
- Stream Protection District
- Wetlands
- Resource Protection District
- Designated Growth Area
- Wetland Protection District

Neither KVCOG nor the Town of Fayette assume any liability for the data delineated herein. All information depicted on this map is for planning purposes only and non-regulatory. Boundary data is based on digital sources and may differ from ground-based observations.  
 Data Sources: Maine Office of GIS, Maine DOT Created 01-2021 CT