



## **KENNEBEC LAND TRUST ECHO LAKE WATERSHED PRESERVE 304 ACRES, READFIELD AND FAYETTE**

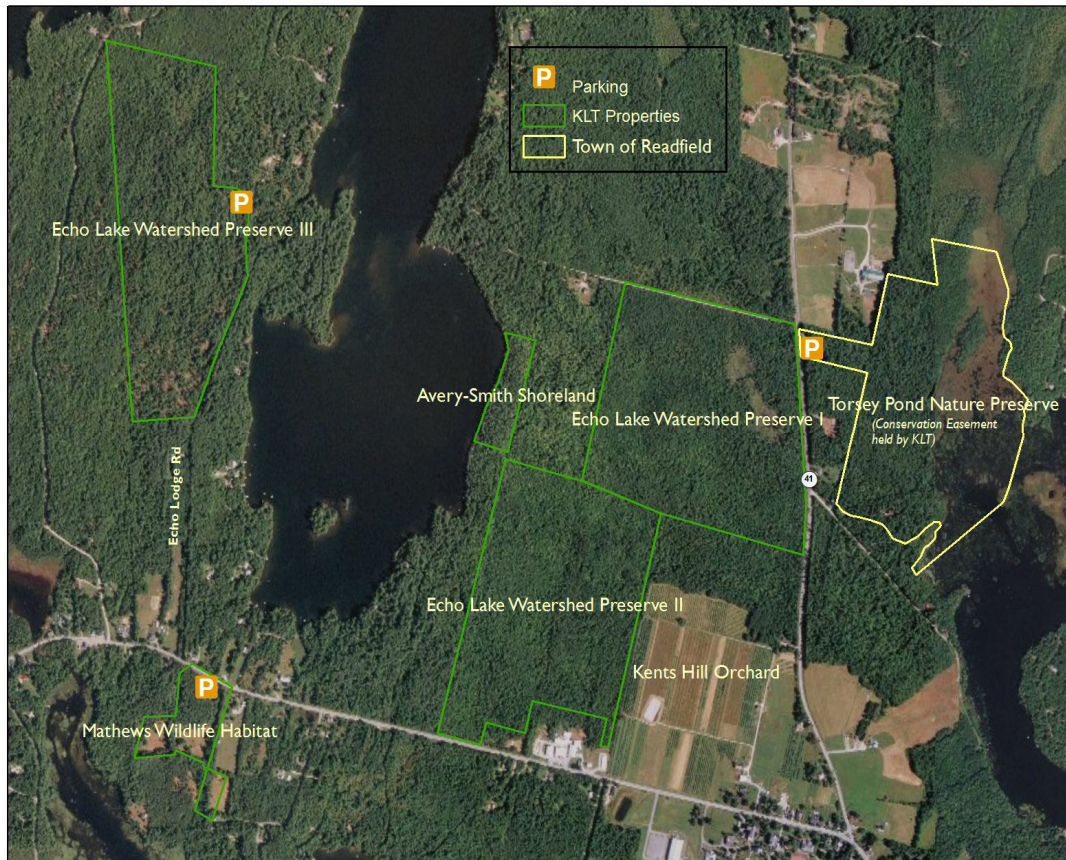
*KLT's 304 acre Echo Lake Watershed Preserve permanently protects natural resources that are important to our communities --wildlife habitat, lake water quality, scenic views, and recreational opportunities for year around residents and summer visitors. The Echo Lake Association, members of the Association, and KLT are proud to have conserved these forested parcels, part of Maine's rural character.*

In September, 2009, 100-acres of forestland in Fayette were added to KLT's Echo Lake Watershed Preserve—the third successful conservation campaign organized by members of the Echo Lake Association and the Kennebec Land Trust. This newest KLT conservation property, part of a peninsula on the west side of Echo Lodge Road, has high ridgelines, a mixed-age conifer-hardwood forest with rocky outcrops, wetlands, and vernal pools. With this conservation purchase, Echo Watershed Preserve now encompasses 304 acres. The first two “Echo” campaigns were:

- ❖ 2004 purchase: 100 acres of early successional forest with beaver flowage, across from Torsey Pond Nature Preserve (TPNP, on Rt. 41 has a network of trails and a plowed parking area, and is owned and managed by the Town of Readfield, with a conservation easement held by KLT);
- ❖ 2007 purchase: 104 acres in Readfield, adjacent to the 2004 purchase, with wetlands, and forestland with frontage along Route 17.

KLT's Echo Lake Watershed Preserve conservation lands are managed to protect water quality and valuable wildlife habitat as well as for low impact public recreation. At this time, there are no developed trails. All of the Echo Watershed Preserve properties are open to the public for hiking, snow-shoeing, cross-country skiing, hunting, and nature observation.

**Public Access** to Echo I and II parcels is from the Town or Readfield's Torsey Pond Nature Preserve parking lot on Route 41. **Access to Echo III** is from a small parking area marked with a KLT sign on the Echo Lodge Road, a private road. During the winter and mud season (approximately December 15- April 15) there is no public motorized vehicle access to the Echo 111 property via the Echo Lodge Road.



The Echo Lake III Committee included David Fuller, Ann Judd, Andy Lilienthal, Bob Mohlar, Pat Mooney, John Orestis, Reade and Joan Ryan, and Carl R. Smith. Two committee members commented about the importance of these conservation lands:

*The residents of Echo Lake are a committed group of individuals willing to help ensure that the area around the lake is maintained thoughtfully and with future generations in mind. With this important acquisition of watershed acreage surrounding Echo Lake, they have again proved what a major impact an engaged group can have when working toward a common goal.*

**Andy Lilienthal.**

*As a member of the Echo Lake Association, I am pleased that we have been able to preserve our third 100+ acre piece of land. In cooperation with the Kennebec Land Trust, we have conserved over 300 acres of land in the Echo Lake and Torsey Pond Watershed. Echo Lake is one of the cleanest lakes in Maine, and the efforts of the land trust and all of our neighbors on the lake will help keep it that way.* **John C. Orestis**

Looking ahead to the next conservation project, KLT is supporting Maine Farmland Trust (MFT) in their efforts to conserve Kents Hill Orchard, adjacent to the Echo Lake Watershed Preserve I and II parcels.

**Kennebec Land Trust:** 134 Main Street; PO Box 261; Winthrop, Maine 04364;  
(207)-377-2848; [www.tkl.org](http://www.tkl.org);

**Maine Farmland Trust, Kent's Hill Project** 97 Main Street Belfast, Maine 04915;  
(207)-338-6575 [www.maineFarmlandtrust.org](http://www.maineFarmlandtrust.org)